



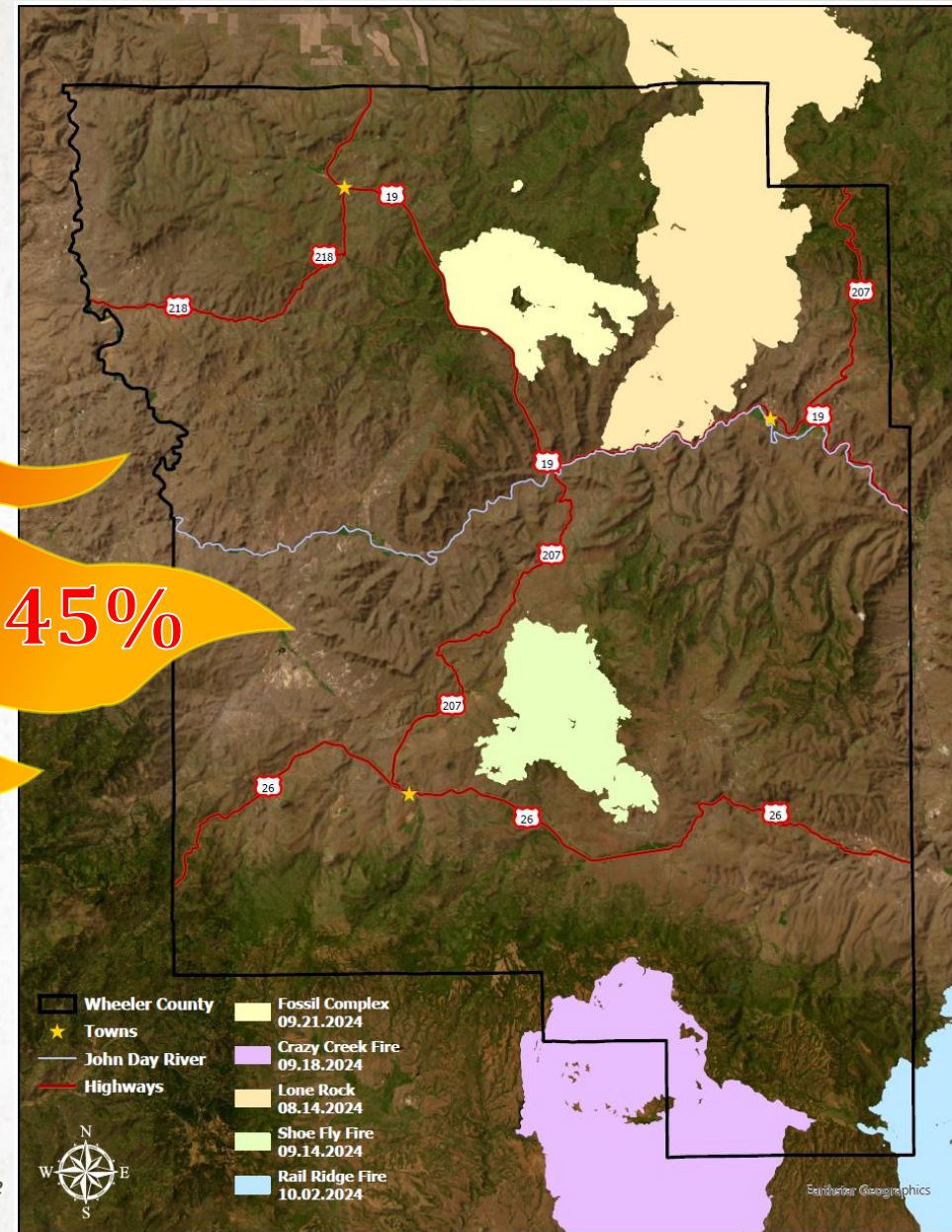
WILDFIRE RESPONSE, RECOVERY, RESILIENCY

WHEELER SOIL AND WATER CONSERVATION DISTRICT, 2024

2024 WILDFIRES OVERVIEW

- Lone Rock Fire, 137,182.29 acres
 - 66,004.56 acres in Wheeler County
- Crazy Creek Fire, 86,968 acres
 - 26,941.88 acres in Wheeler County
- Rail Ridge Fire, 167,786.36 acres
 - 3,946.81 acres in Wheeler County
- Shoe Fly Fire, 26,806.20 acres
 - 100% in Wheeler County
- Fossil Complex, 23,975.96 acres
 - 100% in Wheeler County
 - Kinzua Fire, 95.97 acres
 - Service Fire, 23,866.07 acres
 - Holmes Fire, 13.92 acres
 - **two fires in this complex were outside of Wheeler County and the acres are not accounted here*

~147,675.41
acres
 *not including smaller
 ODF/Local/Private
 responded incidents
13.45%



RESPONSE

- Suppression & Preparation
- Supply gopher
- Equipment shuttles
- Evacuation assistance





<https://youtu.be/pZzZp2R1mZk?si=teQj5rz0wy5ZoTGw>

WHEN THE SUPPRESSION TEAMS LEAVE..

Landowners are left with little direction. They look to SWCDs and other conservation agencies for assistance. And our work begins....



RECOVERY

- Wheeler SWCD built a website to centralize all resources shared pertaining to wildfire recovery
 - <https://www.wheelerswcd.org/2024-wildfires>
- Coordinate with USDA staff to distribute producer packets in-person – mailed remaining
- Gather landowner information
 - Contact information
 - Lessee information, where applicable
 - Marked maps depicted wildfire damages (including structures)
 - Recovery/restoration priority practices and locations

Shoutout!

Gilliam SWCD and Wheeler/Gilliam USDA office started the recovery process while Wheeler SWCD was still on the fire line for the Lone Rock Fire and have continued to assist while Wheeler was still burning!

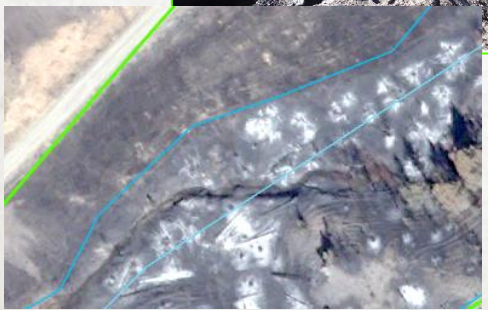
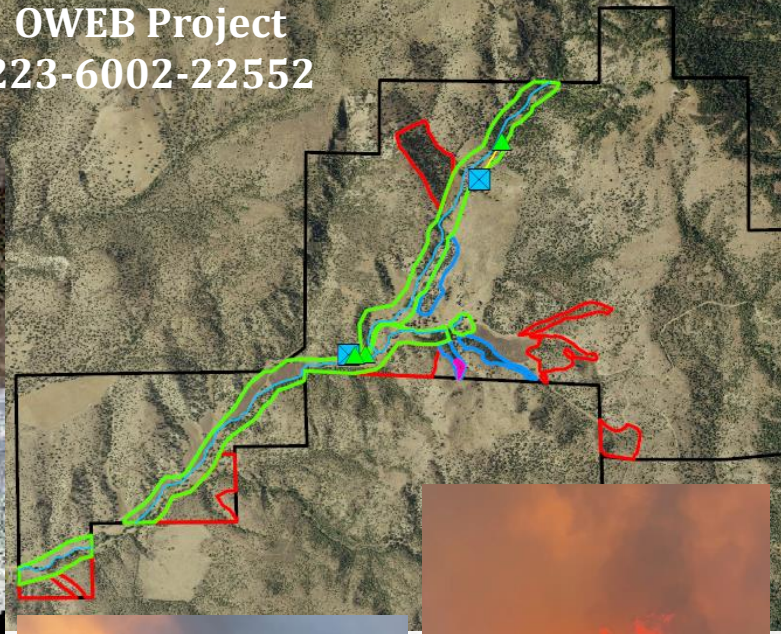
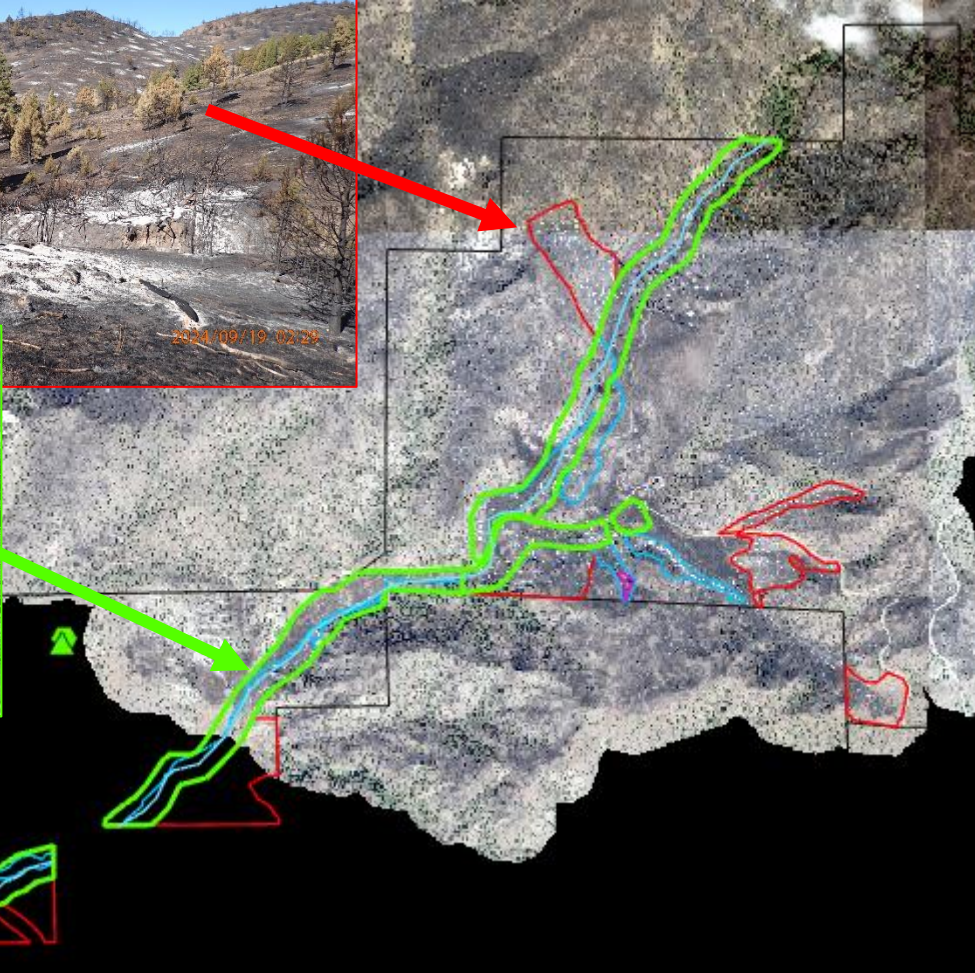
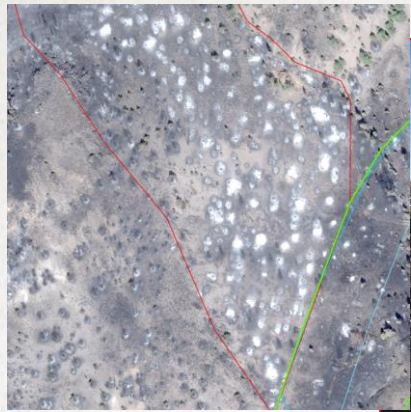
- Worked with Gilliam SWCD to obtain satellite imagery
- Communicating with funders of open projects affected
- Exploring post-fire recovery funding opportunities
- Collaborating with partners on strategic approach for post-fire restoration actions
- Assisting ODF teams with landowner communications for suppression repairs

SATELLITE IMAGERY

- ▲ Spring Development - Copy
- Water Facility
- Spring_Fence
- Livestock_Pipeline
- Keyes_Creek_Full
- Keyes_Creek_Buffer
- Aspen Stand
- Hand_Cut_Juniper
- Mechanical_Brush_Management
- Property_Boundary

Headwaters of Keyes Creek Project Overview

OWEB Project
223-6002-22552



RESILIENCY

*Preventing the next catastrophic wildfire starts with
how we recover from 2024!*

Resilient Landscapes

- Education/events
- Technical and financial assistance
- Management plans
- Strategic restoration
- Partnerships
- *(Internal)* Strategic Direction
- *(Internal)* Long-Range Business Plan

Resilient Communities

- Education/events
- Defensible space funding
- Emergency preparedness
- Resources

REcovery

siliency

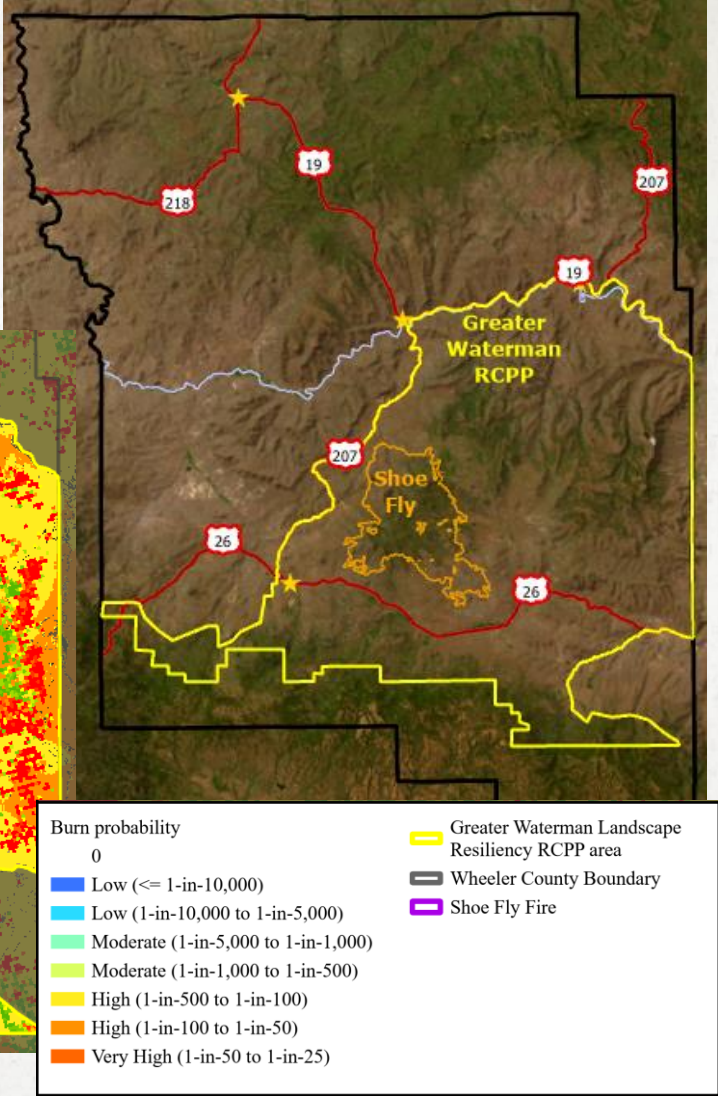
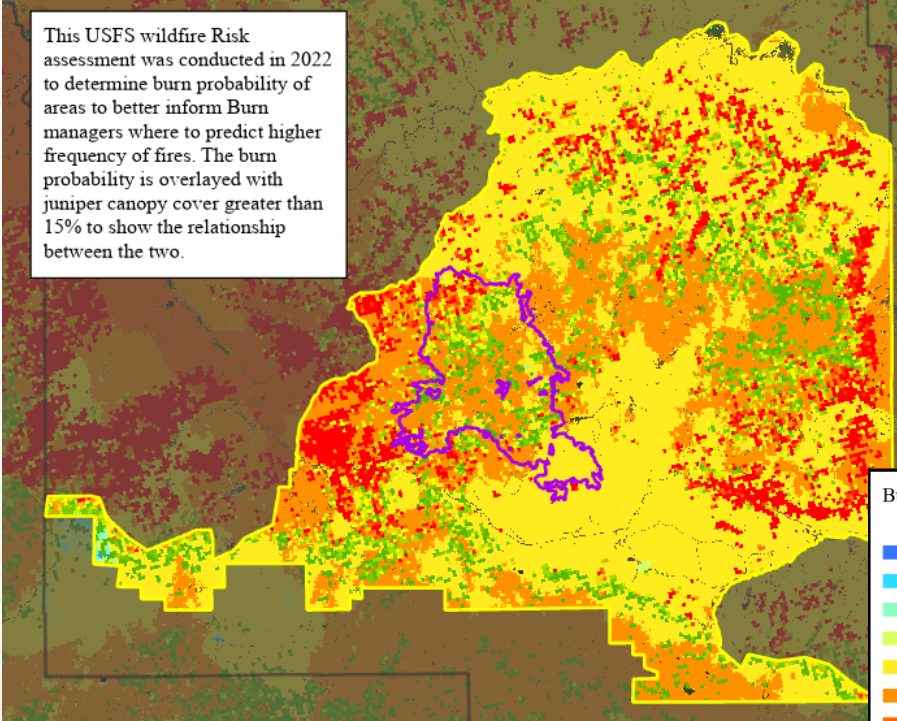
*Wheeler County landowners and residents fought to save our landscape,
we continue to support them in recovery and resiliency!*

GREATER WATERMAN LANDSCAPE RESILIENCY PROJECT

RCPP application submitted July 2, 2024 in partnership with Sustainable Northwest

- Brush Management
 - 7,025 acres
- Forest Stand Improvement
 - 11,525 acres
- Range Planting
 - 1,490 acres
- Fuel Breaks
- Woody Residue Treatment
- Prescribed Burning
- Prescribed Grazing

Awards announced this month!





Wildfire Response, Recovery, and Resiliency all take partnerships to achieve success. Much of Eastern Oregon has a lot of work ahead; but together, we can achieve a healthy, resilient landscape.

Thank you!

CASSI NEWTON
DISTRICT MANAGER
WHEELER SWCD

40535 Hwy 19

Fossil, Oregon 97830

(o) 541.468.2990

(c) 541.620.8767

administration@wheelerswcd.org